
MD960U

2.0 Mega Pixels CCD USB Dental Camera

ALPTA™



User Guide

For attaining the best usage result , Invite careful reading this manual before using!



Connection schematic drawing

Remark:

The machine need to connect with USB interface behind the host computer motherboard based USB2.0 , please do not use front-end USB interface, because most of the host front-end is USB1.1, the picture image occur poor quality and unstable.

TABLE OF CONTENTS

1.Introduction	1
1.1.Dental camera description	1
1.2.Product accessories	1
1.3.Function elucidation	1
1.4.Product disposition schematic drawing.....	2
2.Software installation instructions	3
3.USB 2.0 device setup	6
4. How to use application.....	9
5.Specification chart of products	13
6.Solution of simple hitch	14
7.Notice.....	15

1.Introduction

1.1.Dental Camera description

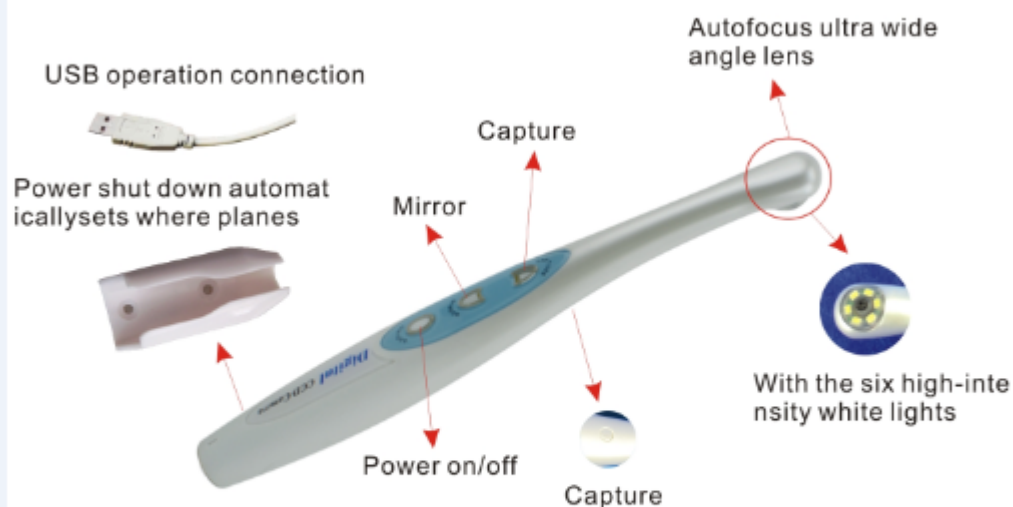
Dear customer:

Thanks for your purchasing our company's product.This product is designed for dentist, you can put the camera of miniature digital instrument into the camera can focus and form the size of picture automatically.Fixed focus lens allows the user to concentrate on the patient and not on focusing,so it is a good assistant for Dentist.

1.2.Product accessories

1.Handset	1 set	2.Handset bracket	1 set
3.Cable	1 set	4.camera barrier	1 set
5.Host CD Driver	1 set		

1.3.Function elucidation



1.4. Product disposition schematic drawing



Handset



CD-ROM drive



Handset bracket



camera barrier



Cable

2. Software installation instructions

Insert the disk. Setup should start automatically. If it doesn't, click **Start, Run**, and then enter **d:\setup\setup** at the command line (if your CD drive is a letter other than "d", use that letter instead) Please click Dental or Super cam.

Back to the disk . click file "Dental USB " .
shown as below:



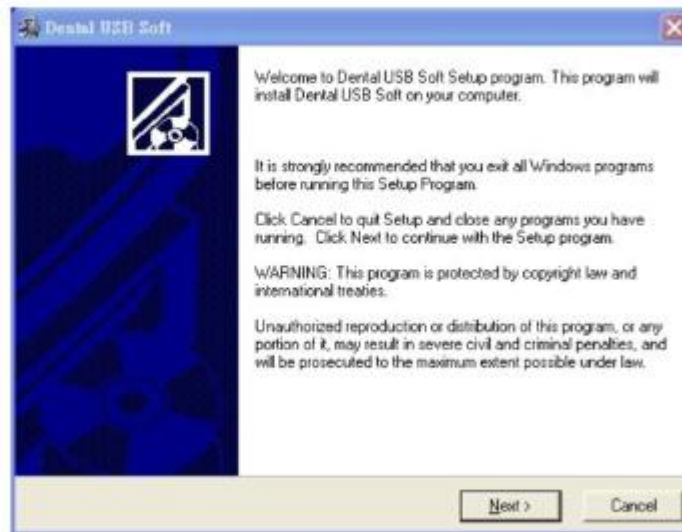
Then wait a while



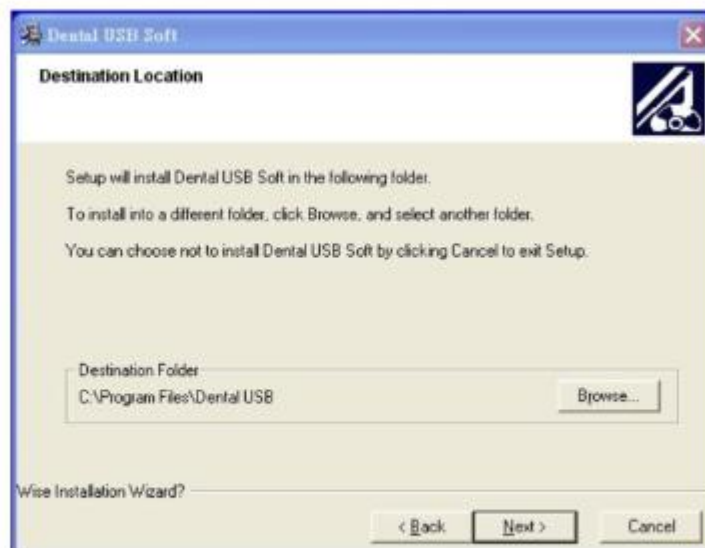
Remark:

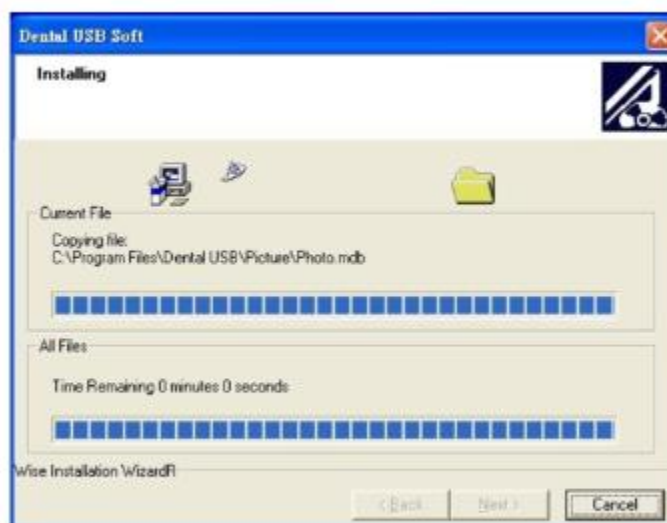
1. Please take out the net, when installing the USB driver finished it and link the net.
2. Please exit to the video software window at first, and then close the intraoral camera, to avoid the computer can't work.

Click **Install** to begin the setup process.

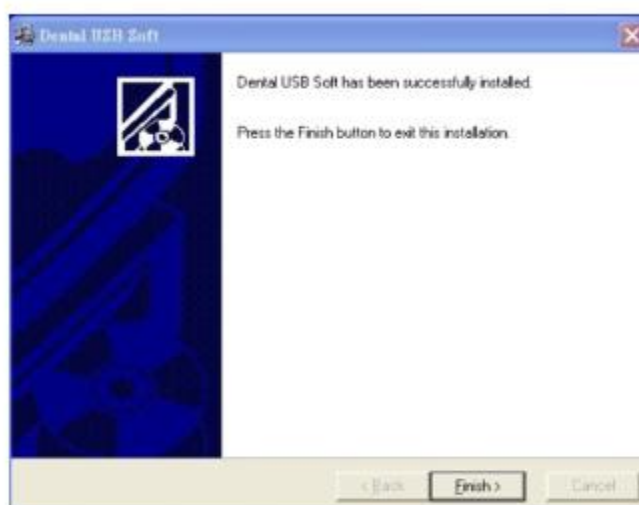


Click **Next**





When the new video series is installed, click
Finish



3.USB 2.0 device setup

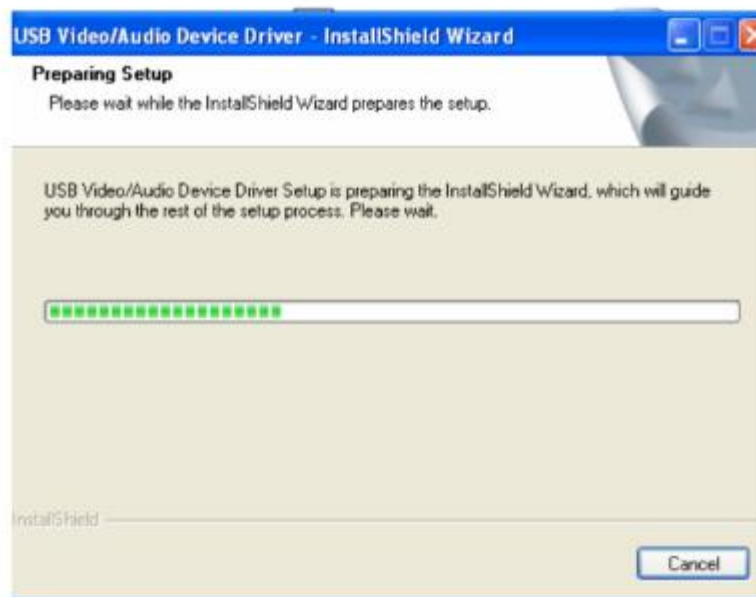
PLEASE NOTE: When you connect the Super camera to your computer, Windows will automatically detect this new device.

Step 1

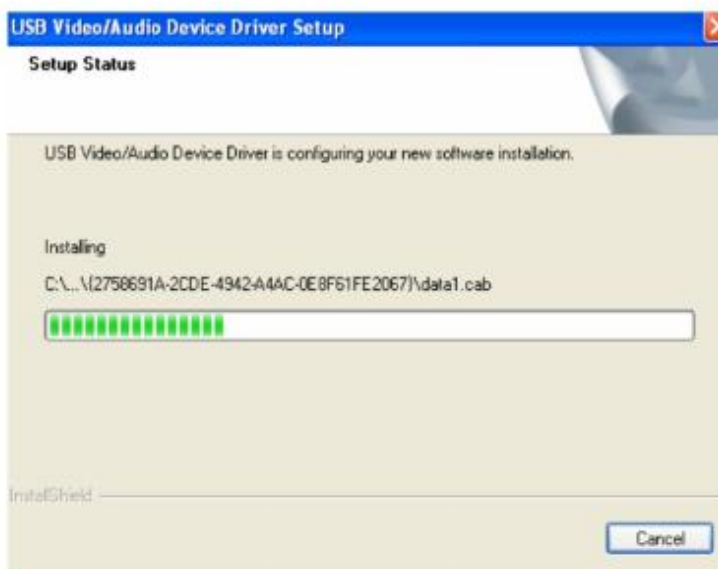
Back to the disk . Click file USB 2821 IMAGE DRIVE. Then click as below:



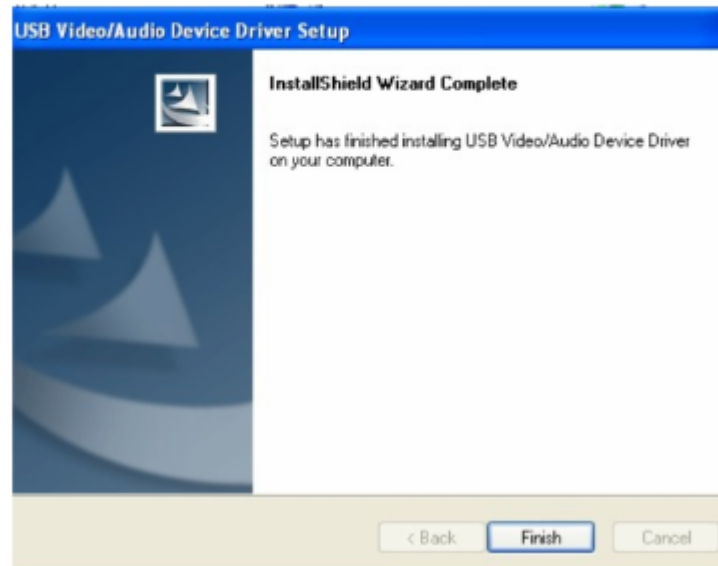
Then wait a while



Click Next.

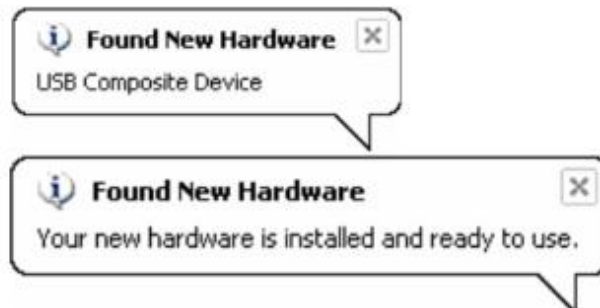


Then Click Finish



Step 2

Connect the Super camera to your computer. When you do, you will receive a momentary message saying that Windows has detected new hardware.

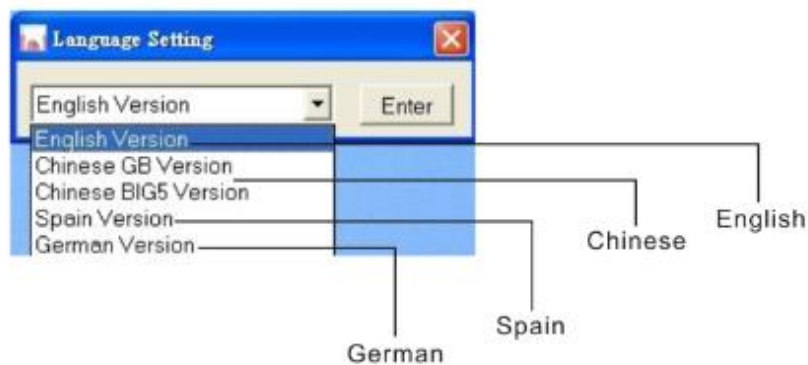


4.How to use application

After installation of driver and USB device, please back to the desktop, click "Dental Usb" to begin the software.



Choose start menu, select language and capture model.



Click icon to enter the system.



System into a user basic information registration, the establishment of user. click [ADD] to add the user, and then click [Enter] to enter the system.

 A screenshot of a window titled 'login' (though it appears to be a registration form). The window has a pink background. It contains several input fields and buttons. The input fields are labeled 'No.', 'Name', 'Identity card', and 'Tel.'. Below these fields are six buttons arranged in two rows: 'Add', 'Search', 'Exit' in the top row, and 'Edit', 'Delete', 'Enter' in the bottom row. At the bottom of the window, there is a table with four columns: 'No.', 'Name', 'Identity card', and 'Tel.'. The table has a yellow background and a scroll bar on the left.

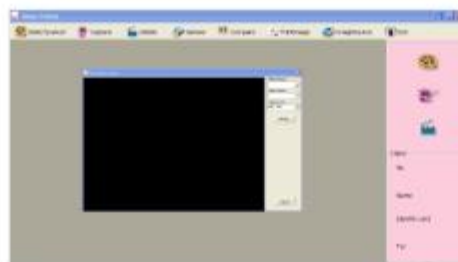
USER GUIDE

Note: Registered users can directly click [Search] to search, double-click selected user entry into the system; can also click the [Edit] to edit user or click [Delete] to delete the user.



Press mouse right button in blank part could change language

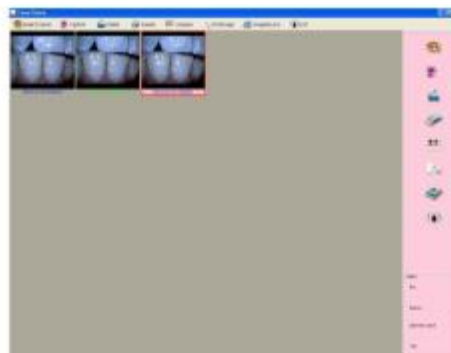
Before using if required to adjust the brightness, when the pop-up screen come out, then you click image [Setting] select the brightness you need. as shown below:



Capture: The intraoral camera pointed at your teeth, click freeze button on the handpiece or click [Capture] button in the software to take pictures.



The image displayed on the software interface, Click save as the image will be saved to any location on your computer:



5.Specification chart of products

Specification	MD960U
Power	DC 5V±0.5 (1.5A)
Image sensor	1/4" Sony CCD
Image resolution	2.0 Mega pixels
Lamp	6 pcs white LED
Accumulation point	3~50mm
Photographing visual angle	105°
Length of handset	216mm
Lead	Length:2m connect port:5 pinhole
Weight of handset	40g

6. Solution of simple hitch

You can operate according to method of hereinafter when the product does not work. You can contact with dealer or our company when you cannot solve it.

Item	State of hitch	Solution method
1	Turn on and the host no display	Check power supply socket connection ok or not.
2	Computer/TV has no image	1. Check if main body is connected with computer or TV correctly. 2. Check if driver program of computer is installed and attribute is set correctly.
3	The image is slightly fuzzy	1. It is normal phenomenon of heating itself if you use it for the first time.
4	The frame is twinkling after freezing	1. The handset must keep still when freezing. 2. You can do it again and again if you are Unskilled.
5	The picture of computer/TV has stain	1. Check the surface of monitor clear or not. 2. Check the surface of lens clear or not. You can wipe off the dust by clean cotton swab. 3. Please contact with us if you cannot solve it by above method.

7. Notice

- Please read carefully notice hereinafter before you use the product, you should stow for later query.
- Product
 - When using this product please wear a camera sheath so as not to scratch the lens or water, or lens blur. The company is not responsible for it.
 - Please shutdown then plug the data lines, to ensure the normal use.
 - Please close the video window at first, and then close the power when you don't use the machine, to avoid the computer can't work.
 - Don't let sharp thing, metal or liquid into or touch signal tie-in in order to protect it.
 - Cut off power supply if you don't use it for a long time.
 - Don't discompose or dismantle any part of the product lest destroy product.
 - Don't compress it.
- Power supply
 - You should use appointed special transformer lest destroy product.
 - Cut off power supply if you don't use it for a long time.
 - You cannot use line of power supply, plug or socket when it was damaged.
 - Don't compress line of power supply or signal connection line.
 - Don't let line of power supply or signal connection line expose in gangway
 - lest line is trampled.
 - Don't put line of power supply or signal connection line in damp place.
- Surrounding environment
 - Put the product in dry and ventilated place.
 - Don't put the product in super-cooling, super-hot, super-damp, direct-irradiation, dusty place.